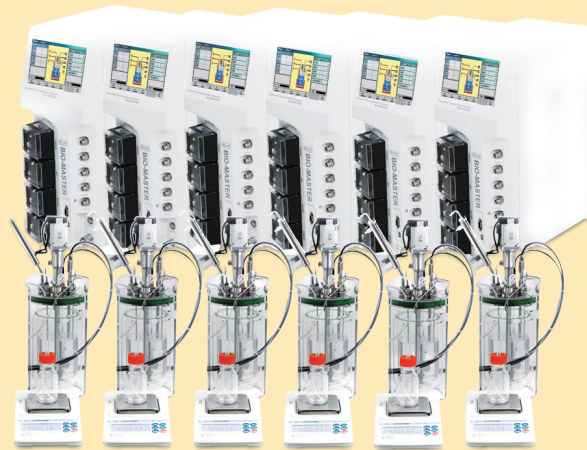


Fermentors

LiFlus GX / GM

- High density fermentation
- Individually controlled 4 peristaltic pump for pH, DO, anti-foam and feeding
- Wide range vessels from 0.5 liter to 14 liter
- Easy control of external devices (O₂/CO₂ analyzer, glucose analyzer, gas mixer, etc.)
- Data tracking and analysis through RS232
- Accurate PID temperature sensor
- Intelligent 7" wide color touch screen



Various of vessels

Easy to use program control

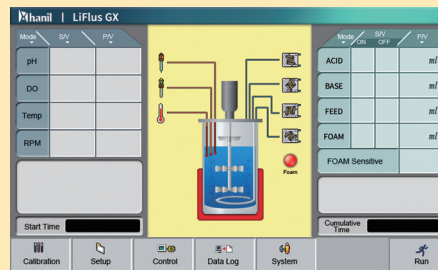


Single vessel



Double vessel

Main control screen



PBR vessel

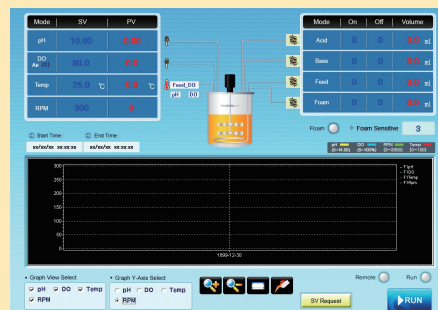


Round bottom vessel



Bowl vessel

PC monitoring software



Specification

Model	LiFlus GX	LiFlus GM
Type	Single	Multi
Display	7 inch wide touch screen	
Agitation Range	50-1,200 rpm	
Impellers	Rushton standard with fermentation / Pitched blade standard with cell culture marine blade or spin filter	
Peristaltic pumps	4 x built-in feeding pump	
Power Requirement	AC110~220V, 50/60 Hz, 500W	
Dimension (W x D x H)	188 x 350 x 620 mm	
Weight	15 Kg (controller only)	
Thermostat system	8~70°C (±0.1°C) / Pt-100 probe heating & cooling PID control / built-in heat exchanger / automatic cooling water valve	
Aeration	Ring sparger (round type), Air-flow meter (standard) or 2 gas and 4 gas Mixer (option)	
Sensor		
Temp	8~70°C	
pH	2.0-12.0 pH of set point	
DO	0-200%, DO cascade to Agitation	
Anti-foam	Conductivity type	

Photo Bioreactor

- Photosynthetic microorganism cultivation
- Various types of photo bioreactor (flat, α -type, pipe and etc.)
- LED illumination with full spectrum imitates natural sunlight by emitting light at 430 nm, 630 nm, white LED
- Easy to scale up



PBR Lab Scale



PBR Pilot Scale

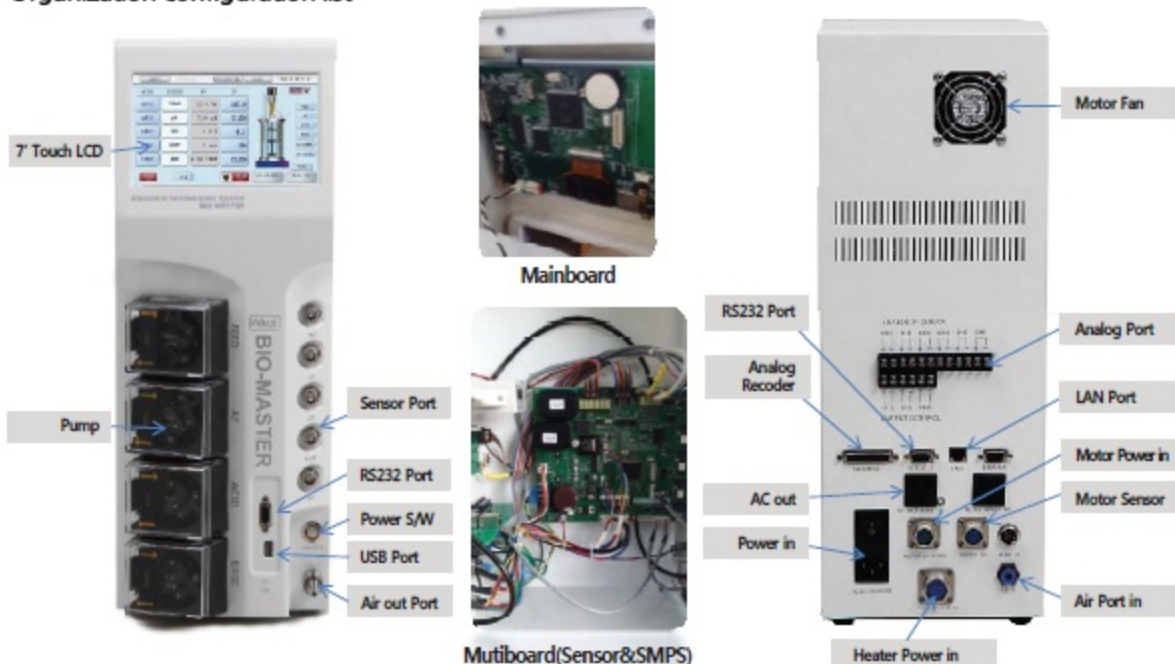
Standard products

Display	7inch Wide Touch TFT LCD
Agitation Range	10 ~ 1500rpm
Motor drive	AC Servo Motor, BLDC Motor / Top drive motor(mechanical drive)
Peristaltic Pumps	4 x Built in Feeding Pump(Watson Malow &Boxer)
Power Requirements	AC110~220V, 50/60Hz,Single Phase, 500W(FreeVoltage)
Dimension	W188mm x D350mm x H620mm
Weight	10Kg (Controller Only)

Sensor	Basic
	TEMP PH DO Anti Foam ORP
	Optional
	OD O2 CO2 MFM or MFC Pressure Balancer

Control System Control	Built-in SCADA System	<ul style="list-style-type: none"> - Built-in SCADA System - Voltage Specifications : 90~260V 50/60Hz Free Voltage - Built-in type SMPS Module UL certification. - CE product certification to enable component selection and PCB ARTWORK. - PWM frequency control AC Servo Motor, Ac induction Motor, BLDC Motor and Is, slow down as fast and smooth implementation. - RS232 x 2, RS422 or RS485 communication port, USB port, apply - Analog Input: 12 points, analog output: 12 points, analog record: 12 points - Temp, PH, DO Cascade, ORP, OD, O2, Co2, Agitation, MFC, Pressure Balancer Control
	Ethernet	1PC 6-8 connected to one controller (after completion of standard controller progress) Data logging, trend graph PC Contorl: process control (PID, the upper and lower values , programs, cascade, Feed)
	Record Output	Each sensor can be output by selecting data. D-SUB 25Pin Female Type, USB Excel file stored separately.
Communication port	USB	Measured data, setup data stored in the USB

Organization configuration list



Accessory

Single Vessel



- Basic vessel for microorganism fermentation
- High-speed agitation by applying durable Tob Drive Motor
- Single glass type : Pyrex / Stainless 316
- Temperature control : Heater plate in underbody, coldfinger(from 3L) inside

Volume	Order No.	Description
Single 1.5L	101 0102	I.D 115mm, V.H 170mm, 1:1.5
Single 3L	101 0103	I.D 133mm, V.H 220mm, 1:1.7
Single 5L	101 0104	I.D 170mm, V.H 220mm, 1:1.3
Single 7L	101 0105	I.D 170mm, V.H 310mm, 1:1.8
Single 10	101 0106	I.D 190mm, V.H 355mm, 1:1.8

500ml Single Vessel



- Small vessel for microorganism fermentation
- High-speed agitation by applying durable Tob Drive Motor
- Single glass type : Pyrex / Stainless 316
- Temperature control: Heater plate in underbody
- Applied pH, DO, Inoculum port on side wall

Volume	Order No.	Description
Single 500ml	101 0101	I.D 85mm, V.H 120mm

Double Vessel



- Double glass type vessel
- Circulating water in double jacket for effective temperature control by large contact surface
- Connected to extra Water Bath for temperature control

Volume	Order No.	Description
Double 1.5L	101 0201	I.D 110mm, V.H 150mm, 1:1.3
Double 3L	101 0202	I.D 130mm, V.H 220mm, 1:1.7
Double 5L	101 0203	I.D 145mm, V.H 300mm, 1:1.2
Double 7L	101 0204	I.D 160mm, V.H 330mm, 1:1.7

Bowl Vessel



- Stainless Double Jacket in upper body, Single Glass in under body
- Circulating water in double jacket for effective temperature control by large contact surface
- Connected to extra Water Bath for temperature

Volume	Order No.	Description
Bowl 10L	101 0301	I.D 190mm, V.H 355mm, 1:1.8
Bowl 14L	101 0302	I.D 190mm, V.H 500mm, 1:2.6

Single Round Vessel



- Single round vessel: round type under body
- Temperature control: Glass surrounding heating blanket
- Usually applied in animal cell fermentation

Volume	Order No.	Description
Single Round 2L	101 0405	I.D 115mm
Single Round 3L	101 0402	I.D 133mm
Single Round 5L	101 0403	I.D 170mm
Single Round 7L	101 0404	I.D 170mm

PBR Single Vessel



- Single vessel type, LED Bar inside to make growth by exposing light into algae
- LED inside / flourscent jacke

Volume	Order No.	Description
Single 1.5L	101 0102	I.D 115mm, V.H 170mm, 1:1.5
Single 3L	101 0103	I.D 133mm, V.H 220mm, 1:1.7
Single 5L	101 0104	I.D 170mm, V.H 220mm, 1:1.3
Single 7L	101 0105	I.D 170mm, V.H 310mm, 1:1.8
Single 10	101 0106	I.D 190mm, V.H 355mm, 1:1.8

Rushton turbine impeller



- Rushton turbine impeller is located from middle to bottom and basically used to agitate liquid in vessel.
- It makes the flow to the same direction with turning radius and has features of paddle and propeller types to be available for high-speed rotation by minimizing resistance.
- General model to be used due to the highest ventilation efficiency

Foam Breaker



- Installed in upper side of inside shaft, used in bursting fermentation foam.
- It is not used in the case of animal cell fermentation since there is barely any foam.
- 1 ea / 1 vessel

Marine Impeller



- Applied to damageable cell
- It stirs liquid from down to up rotating in low-speed since it has the large surface of wings

Hollowed Paddle Impeller



- It stirs liquid from up to down rotating in low-speed since it has the large surface of wings.
- Extra additional it.