

## Continuous Tubular Centrifuge

### *J1250*

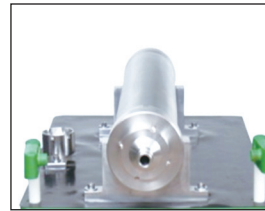
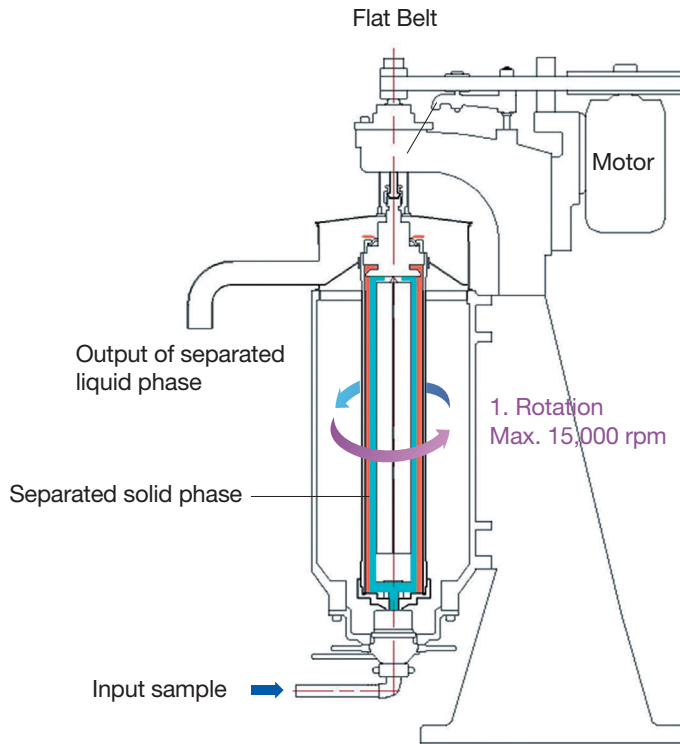
- Tubular type industrial centrifuge for continuous sample separation
- Two-phase separation of liquid and solid
- Used for collecting precipitates or sludge of pharmaceutical, food processing, chemical industry or water treatment, etc.
- Good for the separation of highly viscous samples instead of filtration
- The sample flows into the bottom of the rotating bowl, the solid accumulates on the inner wall, and the liquid is discharged at the top.
- Premium quality stainless steel bowl with painted steel body or all stainless steel body
- Accurate speed control from 1,000 to 15,000 RPM through inverter and RPM Sensor
- Safety schemes of motor cut-off at door-open for spinning and distinctive emergency stop button

Provided with 3 types of input nozzles (ø 3, 4, & 5 mm)

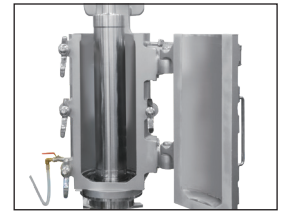
Stainless steel trolley for handling bowl and keeping tools



## Mechanical Structure



**Bowl**

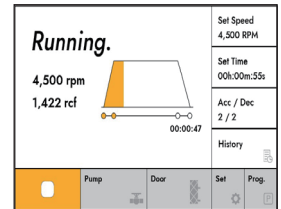


**Door**



**Injection Pump**

Peristaltic Injection Pump  
or Diaphragm Pump



**Controller**

## Applications

### Pharmaceutical areas

Collection of pharmaceutical intermediates, herb extracts, plant fibers and chlorella

### Food processing areas

Soy bean, fat, vegetable oil, starches, grains, gelatin, amino acids, soy sauce, reducing fat in milk

### Chemistry industry areas

Cleaning and collection of ink, paints, ammonia, barium, aluminum, zinc, activated charcoal and stainings

### Waste water treatment

Cleaning on straining waste water, leather waste water, petroleum tank sludge, waste oil

### The other fields

Milk fat processing, cosmetics, cod-liver oil, yeast processing, and many other separation of solution and collection of solids

# Industrial Centrifuges

J1250

## Technical Specification\_Main unit

Functions	Specification
<b>Main unit</b>	
<b>Motor</b>	
Power	380V 3.7kW (3-phase)
<b>Tubular Bowl</b>	
Net Capacity (L) / Weight (kg)	9 / 27
Dimension (inner/outer)	157( $\phi$ ) x 142( $\phi$ ) x 960(L) mm
Material	Stainless Steel 316L
<b>Sample Collection Sheet</b>	Teflon with a dimension of 733x395x0.4 mm
<b>Sample Feeding pump</b>	Peristaltic Tubing Pump (WT600-2J)
<b>Frame and Door, Material</b>	Powder-painted Steel (optional) Stainless steel 304 (optional) Water-jacketed
<b>Frame Base</b>	Powder-painted Steel H-beam with 4 wheels and 6 balancing foot
<b>Trolley for Bowl and Tools</b>	Stainless steel trolley with tools in a box
<b>Dimensions (W x D x H, mm)</b> with H-beam base without pump or trolley	860(W) x 1085(D) x 1900(H) : Door closed 860(W) x 1430(D) x 1900(H) : Door open
<b>Net Weight</b> with H-beam base without pump or trolley	564 kg

## Technical Specification\_Control unit

Functions	Specification
<b>Control unit</b>	
<b>Display screen</b>	7" wide touch (Capacitive type)
<b>Speed control</b>	1,000 ~ 15,000 RPM
<b>Max. RCF</b>	15,801 xg (Radius : 62.814 mm)
<b>ACC / DEC ramps</b>	3 / 4
<b>Program memory</b>	99
<b>Time control</b>	< 100 hours
<b>Data transport</b>	Yes (USB port)
<b>History tracking</b>	Yes
<b>Inverter control</b>	3P4W 380V, 7.5KW
<b>Pump control</b>	Selectable, auto or manual
<b>Safeties</b>	
Actual speed sensing	Yes
Door close/open sensing	Yes
Emergency Stop switch	Yes
<b>Foot switch</b>	Optional
<b>Level sensor 1, 2</b>	Optional
<b>Dimensions (W x D x H mm)</b>	405x 460 x 1310 (incl. warning light)
<b>Weight</b> without cables	47 kg